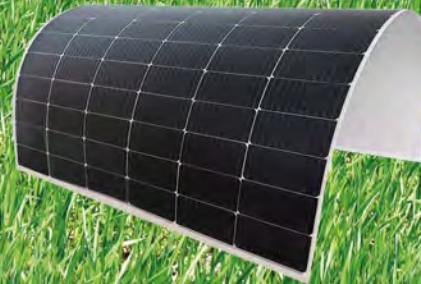
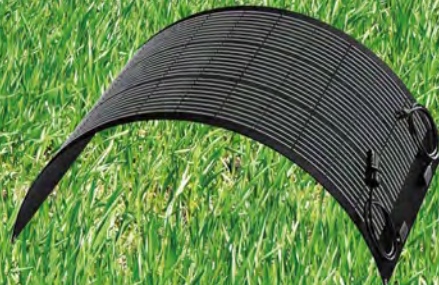
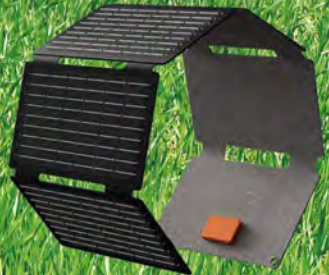
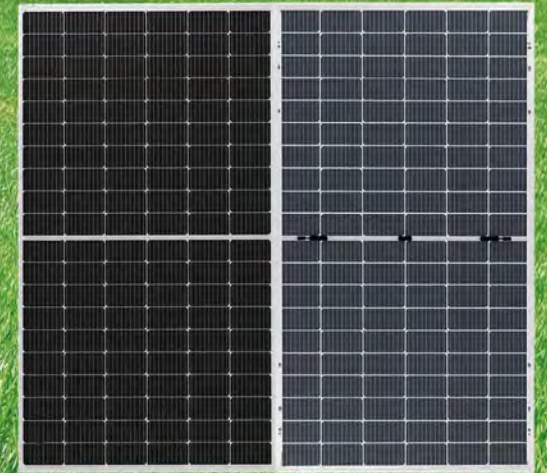
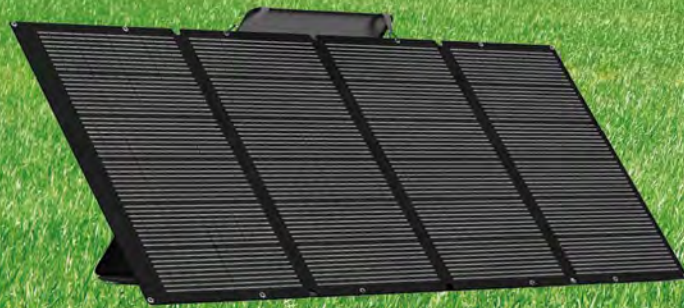




Kinse Solar Panel



Flexible Jingyi Series

KS535-144-M182-FL

KS445-120-M182-FL

KS400-108-M182-FL



Lightweight

The quality is 60% lighter than traditional solar panels, and it is also suitable for small roof loads.

Flexible

Bendable at an angle without cracking and is suitable for curved roofs with curvature

Easy Installation

Adopting tape or structural adhesive for quick installation

Aesthetics

2.5mm thickness allows for a high degree of integration of the product into the building

Easy Cleaning

The use of composite film instead of the glass package, easy to adsorb, easy to flush

Customizable

Dimensions can be customized to fit perfectly with the mounting carrier

390W~400W

MONO-FLEXIBLE MODULE



Key Features



Lightweight

Optimized composite materials, 60% lighter at the same power.



Resin-fiber Strength Improvement

The modulus is as high as 1300MPa, improving the overall strength of the module and solving the hidden crack problem of the cell.



Self-developed Polymer Materials

Light transmittance $\geq 91\%$, far more than conventional solar panels, photoelectricity conversion without a barrier. Ultra-high UV blocking ability ensures power generation efficiency for 25 years.



Easy to Install

Factory-integrated for easy transportation and handling; Eliminating traditional bracket systems and saving installation costs and time.

* Specifications subject to technical changes and tests. Kinse Solar reserves the right of interpretation.

Mechanical Characteristics

Cell Type	P type Mono-crystalline 182 * 91mm
No. of cells	108(12 x 9)
Dimensions	2246 * 927 * 2.5mm
Weight	6.2Kg
Junction Box	IP68 Rated
Output Cables	4.0 mm ²
Cable Length	400mm or Customized Length

Electrical Characteristics(STC*)

Module Type	KS390-108-M182-FL	KS395-108-M182-FL	KS400-108-M182-FL
Maximum Power(Pmax)[W]	390	395	400
Power tolerance[W]		0 ~ +5	
Maximum Power Voltage(Vmp)[V]	30.78	30.98	31.18
Maximum Power Current (Imp)[A]	12.69	12.76	12.83
Open-circuit Voltage (Voc)[V]	36.64	36.84	37.04
Short-circuit Current (Isc)[A]	13.58	13.66	13.73
Module Efficiency STC(%)	18.73	18.97	19.21

*STC : Irradiance at 1000 W/m², Cell Temperature 25°C, Air Mass AM1.5

Leading product and power warranty

12^{YEAR} Materials and workmanship warranty

25^{YEAR} Linear power warranty

430W~445W

MONO-FLEXIBLE MODULE



Key Features



Lightweight

Optimized composite materials, 60% lighter at the same power.



Resin-fiber Strength Improvement

The modulus is as high as 1300MPa, improving the overall strength of the module and solving the hidden crack problem of the cell.



Self-developed Polymer Materials

Light transmittance $\geq 91\%$, far more than conventional solar panels, photoelectricity conversion without a barrier. Ultra-high UV blocking ability ensures power generation efficiency for 25 years.



Easy to Install

Factory-integrated for easy transportation and handling; Eliminating traditional bracket systems and saving installation costs and time.

* Specifications subject to technical changes and tests. Kinse Solar reserves the right of interpretation.

Mechanical Characteristics

Cell Type	Mono-crystalline 182 * 91 mm
No. of cells	120(12 x 10)
Dimensions	2246 * 1020 * 2.5mm
Weight	6.9 Kg
Junction Box	IP68 Rated
Output Cables	4.0 mm ²
Cable Length	400mm or Customized Length

Electrical Characteristics

Module Type	KS430-120-M182-FL		KS435-120-M182-FL		KS440-120-M182-FL		KS445-120-M182-FL	
	STC	NOCT	STC	NOCT	STC	NOCT	STC	NOCT
Test conditions	STC	NOCT	STC	NOCT	STC	NOCT	STC	NOCT
Maximum Power(Pmax)[W]	430	320	435	324	440	328	445	332
Maximum Power Voltage(Vmp)[V]	33.50	31.05	33.70	31.21	33.90	31.39	34.10	31.57
Maximum Power Current (Imp)[A]	12.82	10.34	12.90	10.39	12.98	10.45	13.06	10.51
Open-circuit Voltage (Voc)[V]	40.60	38.31	40.80	38.45	41.00	38.59	41.20	38.73
Short-circuit Current (Isc)[A]	13.25	10.95	13.33	11.01	13.41	11.07	13.49	11.13
Module Efficiency STC(%)	18.77		18.99		19.21		19.42	

*STC : Irradiance at 1000 W/m², Cell Temperature 25°C, Air Mass AM1.5

*NOCT : Irradiance at 800W/m². Ambient Temperature 20°C, Wind Speed 1 m/s

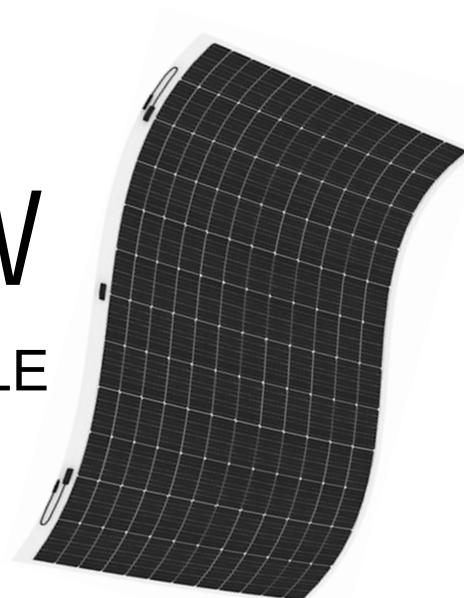
Leading product and power warranty

12YEAR Materials and workmanship warranty

25YEAR Linear power warranty

520W~535W

MONO-FLEXIBLE MODULE



Mechanical Characteristics

Cell Type	P type Mono-crystalline 182 * 91 mm
No. of cells	144(12×12)
Dimensions	2246 * 1185 * 2.5mm
Weight	8.0 Kg
Junction Box	IP68 Rated
Output Cables	4.0 mm ²
Cable Length	400mm or Customized Length

Key Features



Lightweight

Optimized composite materials, 60% lighter at the same power.



Resin-fiber Strength Improvement

The modulus is as high as 1300MPa, improving the overall strength of the module and solving the hidden crack problem of the cell.



Self-developed Polymer Materials

Light transmittance $\geq 91\%$, far more than conventional solar panels, photoelectricity conversion without a barrier. Ultra-high UV blocking ability ensures power generation efficiency for 25 years.



Easy to Install

Factory-integrated for easy transportation and handling; Eliminating traditional bracket systems and saving installation costs and time.

Electrical Characteristics

Module Type	KS520-144-M182-FL		KS525-144-M182-FL		KS530-144-M182-FL		KS535-144-M182-FL	
Test conditions	STC	NOCT	STC	NOCT	STC	NOCT	STC	NOCT
Maximum Power(Pmax)[W]	520	394	525	397	530	401	535	404
Maximum Power Voltage(Vmp)[V]	41.03	37.80	41.21	38.00	41.39	38.20	41.57	38.40
Maximum Power Current (Imp)[A]	12.67	10.36	12.75	10.42	12.81	10.47	12.87	10.53
Open-circuit Voltage (Voc)[V]	48.94	46.10	49.09	46.20	49.24	46.30	49.39	46.40
Short-circuit Current (Isc)[A]	13.64	10.91	13.70	10.96	13.76	11.02	13.83	11.07
Module Efficiency STC(%)	19.54		19.73		19.91		20.10	

*STC : Irradiance at 1000 W/m², Cell Temperature 25°C, Air Mass AM1.5

*NOCT : Irradiance at 800W/ m², Ambient Temperature 20°C, Wind Speed 1 m/s

Leading product and power warranty

12^{YEAR} Materials and workmanship warranty

25^{YEAR} Linear power warranty

* Specifications subject to technical changes and tests. Kinse Solar reserves the right of interpretation.

Lightweight Monocrystalline Solar Panel

395W ~ 415W

Key Features

Superior impact resistance

Lightweight and sturdy, super impact resistance, safety and reliability are guaranteed.

Better resistance to hot spots

Better temperature coefficient and hot spot resistance are obtained by optimizing circuit design and operating current.

Adaptability to harsh environments

Third-party certified to pass high salt spray and ammonia corrosion tests

Multi-master grid technology

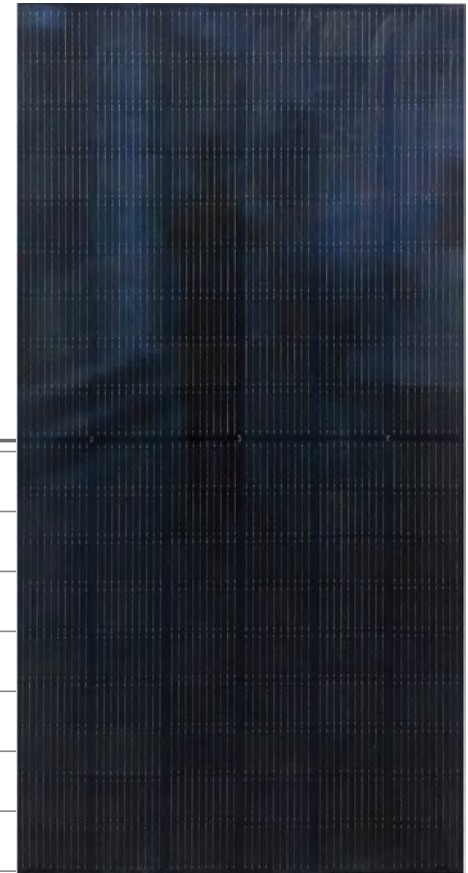
Better light utilization and current harvesting for improved power output and reliability

Anti-PID guarantee

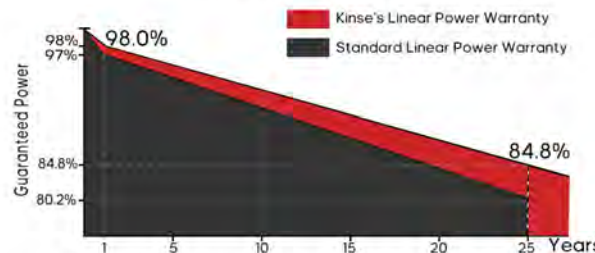
Optimization of battery production technology and material control to minimize the degradation caused by PID phenomenon.

Mechanical Characteristics

Cell Type	N type Mono-crystalline 182 * 91mm
No. of cells	108(54 x 2)
Dimensions	1716 x 1128 x 2.8mm
Weight	7.8kg
Glass	1.1 mm ultra-thin reinforced
Junction Box	IP68 Rated
Output Cables	4.0 mm ² (+) 400mm, (-) 200mm or Customized Length



Linear Performance Warranty



Leading product and power warranty

12^{YEAR} Materials and workmanship warranty

25^{YEAR} Linear power warranty

Mechanical Parameters

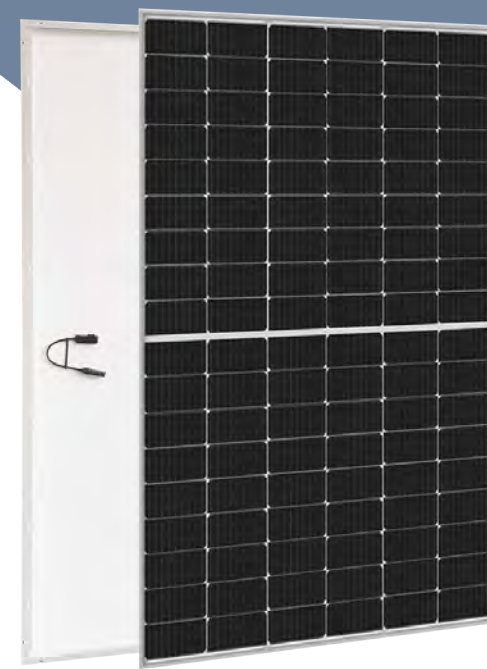
Cell Type	Monocrystalline (182mm)	No. of Cells	108 [2 x (9 x 6)]
Dimensions	1724*1134*30 mm	Weight	21.0kg
Glass	3.2mm Strengthened Glass	Encapsulant Material	EVA/POE
Frame	Anodized Aluminium Alloy	Junction Box	IP68
Output Cable	4.0mm ² , 300/300mm	Connector	MC4 Compatible

Temperature Ratings

Nominal operating cell temperature (NOCT)	42°C ± 2°C
Temperature Coefficient of Pmax	-0.31%/°C
Temperature Coefficient of Voc	-0.26%/°C
Temperature Coefficient of Isc	+0.046%/°C

Operating Parameters

Operational Temperature	-40°C~+85°C
Maximum System Voltage	1500V DC (IEC)
Maximum Series Fuse Rating	30A
Bifacility	/



TOPCon

High Efficiency
Modules

21.23%

Max Efficiency

12 Years

Product Warranty

Monocrystalline

395W ~ 415W

Electrical Characteristics

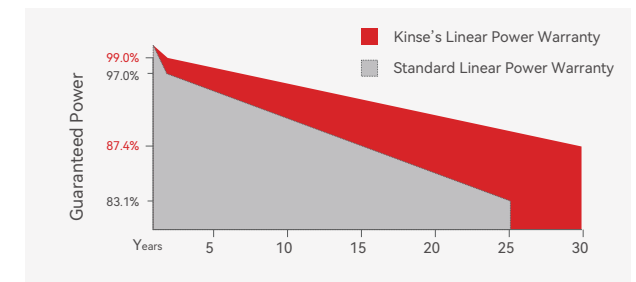
Module Type	KS395-108-M182		KS400-108-M182		KS405-108-M182		KS410-108-M182		KS415-108-M182	
	STC	NMOT	STC	NMOT	STC	NMOT	STC	NMOT	STC	NMOT
Test Conditions	STC	NMOT	STC	NMOT	STC	NMOT	STC	NMOT	STC	NMOT
Maximum Power(Pmax)[W]	395	299	400	303	405	307	410	311	415	315
Maximum Power Voltage(Vmp)[V]	30.98	29.00	31.18	29.20	31.38	29.40	31.59	29.60	31.79	29.80
Maximum Power Current (Imp)[A]	12.76	10.32	12.83	10.38	12.91	10.44	12.98	10.50	13.05	10.56
Open-circuit Voltage (Voc)[V]	36.84	35.30	37.04	35.50	37.24	35.70	37.45	35.80	37.65	36.00
Short-circuit Current (Isc)[A]	13.66	10.95	13.73	11.02	13.81	11.09	13.88	11.14	13.96	11.22
Module Efficiency STC(%)	20.20%		20.46%		20.72%		20.97%		21.23%	

* STC : Irradiance at 1000 W/m², Cell Temperature 25°C, Air Mass AM1.5

* NMOT: Irradiance at 800W/m². Ambient Temperature 20°C , Wind Speed 1 m/s

Note: The electrical performance parameters in the catalog are used to compare different components and do not represent specific performance commitments for individual components.

Linear Performance Warranty



Mechanical Parameters

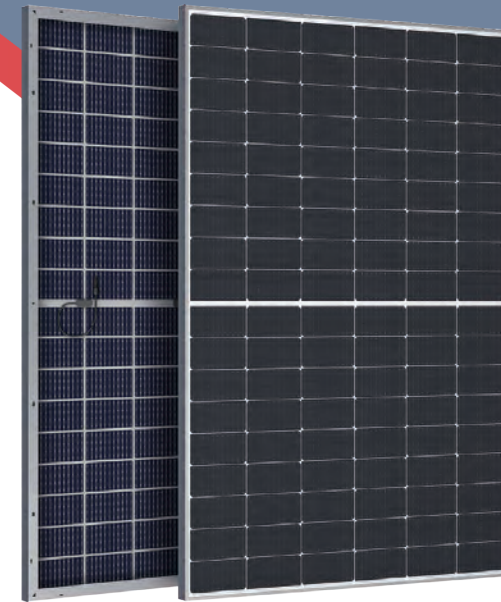
Cell Type	Monocrystalline (182mm)	No. of Cells	108 [2 x (9 x 6)]
Dimensions	1722*1134*30 mm	Weight	24.0kg
Glass	2mm-2mm	Encapsulant Material	EVA/POE
Frame	Anodized Aluminium Alloy	Fire safety class	Class C
Output Cable	4.0mm ² , 300/300mm	Connector	MC4 Compatible

Temperature Ratings

Nominal operating cell temperature (NOCT)	42°C ± 2°C
Temperature Coefficient of Pmax	-0.31%/°C
Temperature Coefficient of Voc	-0.26%/°C
Temperature Coefficient of Isc	+0.046%/°C

Operating Parameters

Operational Temperature	-40°C~+85°C
Maximum System Voltage	1500V DC (IEC)
Maximum Series Fuse Rating	30A
Bifacility	85%-90%



TOPCon
Bifacial Module

22.53%
Max Efficiency

12 Years
Product Warranty

Bifacial Module

420W ~ 440W

Electrical Characteristics

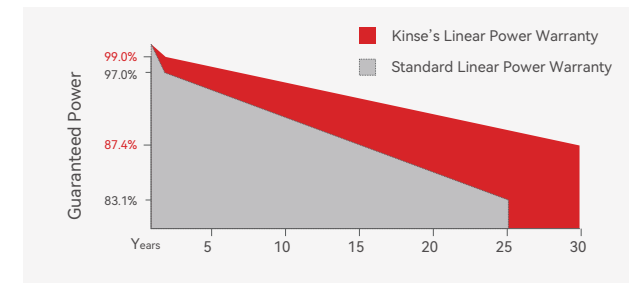
Module Type	KS420-108-M182		KS425-108-M182		KS430-108-M182		KS435-108-M182		KS440-108-M182	
	STC	NMOT	STC	NMOT	STC	NMOT	STC	NMOT	STC	NMOT
Maximum Power(Pmax)[W]	420	322	425	326	430	330	435	334	440	338
Maximum Power Voltage(Vmp)[V]	31.51	30.10	31.70	30.20	31.89	30.30	32.08	30.40	32.28	30.50
Maximum Power Current (Imp)[A]	13.33	10.62	13.41	10.67	13.49	10.74	13.56	10.80	13.64	10.87
Open-circuit Voltage (Voc)[V]	38.13	36.20	38.32	36.40	38.51	36.60	38.69	36.80	38.89	37.00
Short-circuit Current (Isc)[A]	14.03	11.27	14.09	11.33	14.15	11.38	14.22	11.44	14.30	11.49
Module Efficiency STC(%)	21.51%		21.76%		22.02%		22.28%		22.53%	

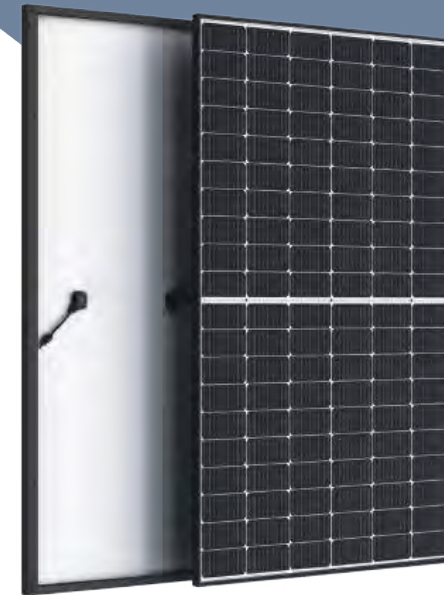
* STC : Irradiance at 1000 W/m², Cell Temperature 25°C, Air Mass AM1.5

* NMOT: Irradiance at 800W/m². Ambient Temperature 20°C , Wind Speed 1 m/s

Note: The electrical performance parameters in the catalog are used to compare different components and do not represent specific performance commitments for individual components.

Linear Performance Warranty





MONO PERC

High Efficiency
Modules

21.25%

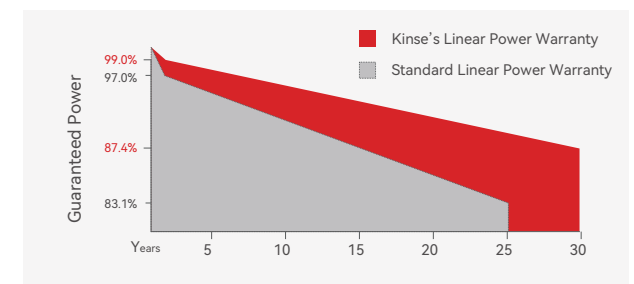
Max Efficiency

12 Years
Product Warranty

Monocrystalline

440W ~ 460W

Linear Performance Warranty



Mechanical Parameters

Cell Type	Monocrystalline (182mm)	No. of Cells	120 [2 x (10 x 6)]
Dimensions	1909*1134*30 mm	Weight	24.2kg
Glass	3.2mm Strengthened Glass	Encapsulant Material	EVA/POE
Frame	Anodized Aluminium Alloy	Junction Box	IP68
Output Cable	4.0mm ² , 1200/1200mm(can be customized)	Connector	MC4 Compatible

Temperature Ratings

Nominal operating cell temperature (NOCT)	45°C ± 2°C
Temperature Coefficient of Pmax	-0.35%/°C
Temperature Coefficient of Voc	-0.29%/°C
Temperature Coefficient of Isc	+0.045%/°C

Operating Parameters

Operational Temperature	-40°C~+85°C
Maximum System Voltage	1500V DC (IEC)
Maximum Series Fuse Rating	25A
Fire Class Rating	Class C

Electrical Characteristics

Module Type	KS440-120-M182		KS445-120-M182		KS450-120-M182		KS455-120-M182		KS460-120-M182	
	STC	NMOT	STC	NMOT	STC	NMOT	STC	NMOT	STC	NMOT
Maximum Power(Pmax)[W]	440	333	445	336	450	340	455	344	460	349
Maximum Power Voltage(Vmp)[V]	33.90	32.46	34.10	32.56	34.30	32.76	34.50	32.95	34.70	33.15
Maximum Power Current (Imp)[A]	12.98	10.26	13.06	10.32	13.14	10.38	13.20	10.44	13.27	10.53
Open-circuit Voltage (Voc)[V]	41.00	38.45	41.20	38.57	41.40	38.68	41.60	38.81	41.80	39.01
Short-circuit Current (Isc)[A]	13.41	10.97	13.49	11.03	13.60	11.10	13.69	11.15	13.78	11.23
Module Efficiency STC(%)	20.33%		20.56%		20.79%		21.02%		21.25%	

* STC : Irradiance at 1000 W/m², Cell Temperature 25°C, Air Mass AM1.5

* NMOT: Irradiance at 800W/m². Ambient Temperature 20°C , Wind Speed 1 m/s

Note: The electrical performance parameters in the catalog are used to compare different components and do not represent specific performance commitments for individual components.

Mechanical Parameters

Cell Type	Monocrystalline (182mm)	No. of Cells	120 [2 x (10 x 6)]
Dimensions	1903*1134*30 mm	Weight	27.0kg
Glass	2mm-2mm	Encapsulant Material	EVA/POE
Frame	Anodized Aluminium Alloy	Fire safety class	Class C
Output Cable	4.0mm ² , 300/300mm	Connector	MC4 Compatible

Temperature Ratings

Nominal operating cell temperature (NOCT)	42°C ± 2°C
Temperature Coefficient of Pmax	-0.28%/°C
Temperature Coefficient of Voc	-0.23%/°C
Temperature Coefficient of Isc	+0.045%/°C

Operating Parameters

Operational Temperature	-40°C~+85°C
Maximum System Voltage	1500V DC (IEC)
Maximum Series Fuse Rating	30A
Bifacility	80%-85%



TOPCon
Bifacial Module

22.71%
Max Efficiency

12 Years
Product Warranty

Bifacial Module

470W ~ 490W

Electrical Characteristics

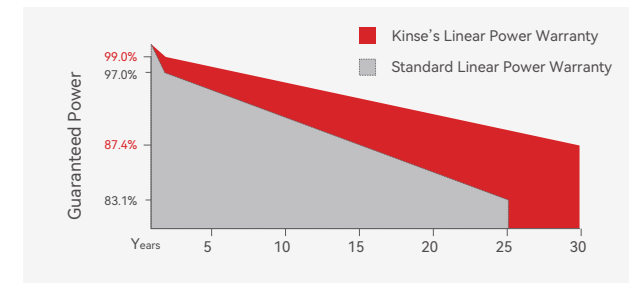
Module Type	KS470-120-M182		KS475-120-M182		KS480-120-M182		KS485-120-M182		KS490-120-M182	
	STC	NMOT	STC	NMOT	STC	NMOT	STC	NMOT	STC	NMOT
Maximum Power(Pmax)[W]	470	360	475	364	480	368	485	372	490	376
Maximum Power Voltage(Vmp)[V]	35.50	32.95	35.70	33.15	35.90	33.35	36.10	33.55	36.30	33.75
Maximum Power Current (Imp)[A]	13.24	10.95	13.31	11.00	13.38	11.05	13.44	11.09	13.51	11.15
Open-circuit Voltage (Voc)[V]	42.40	39.85	42.60	40.05	42.80	40.25	43.00	40.45	43.20	40.65
Short-circuit Current (Isc)[A]	14.06	11.60	14.12	11.66	14.18	11.71	14.24	11.75	14.30	11.81
Module Efficiency STC(%)	21.78%		22.01%		22.24%		22.47%		22.71%	

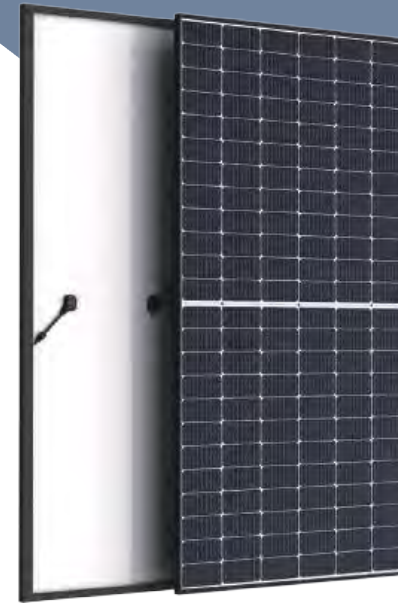
* STC : Irradiance at 1000 W/m², Cell Temperature 25°C, Air Mass AM1.5

* NMOT: Irradiance at 800W/m². Ambient Temperature 20°C , Wind Speed 1 m/s

Note: The electrical performance parameters in the catalog are used to compare different components and do not represent specific performance commitments for individual components.

Linear Performance Warranty





MONO PERC

High Efficiency
Modules

21.28%

Max Efficiency

12 Years
Product Warranty

Mechanical Parameters

Cell Type	Monocrystalline (182mm)	No. of Cells	144 [2 x (12 x 6)]
Dimensions	2279*1134*30 mm	Weight	29.1kg
Glass	3.2mm Strengthened Glass	Encapsulant Material	EVA/POE
Frame	Anodized Aluminium Alloy	Junction Box	IP68
Output Cable	4.0mm ² , 1200/1200mm(can be customized)	Connector	MC4 Compatible

Temperature Ratings

Nominal operating cell temperature (NOCT)	45°C ± 2°C
Temperature Coefficient of Pmax	-0.35%/°C
Temperature Coefficient of Voc	-0.28%/°C
Temperature Coefficient of Isc	+0.045%/°C

Operating Parameters

Operational Temperature	-40°C~+85°C
Maximum System Voltage	1500V DC (IEC)
Maximum Series Fuse Rating	25A
Fire Class Rating	Class C

Monocrystalline

530W ~ 550W

Electrical Characteristics

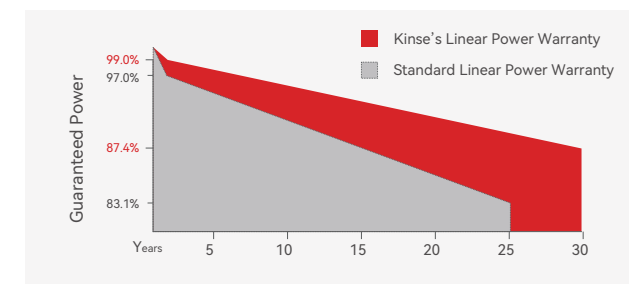
Module Type	KS530-144-M182		KS535-144-M182		KS540-144-M182		KS545-144-M182		KS550-144-M182	
	STC	NMOT	STC	NMOT	STC	NMOT	STC	NMOT	STC	NMOT
Maximum Power(Pmax)[W]	530	408	535	412	540	416	545	420	550	424
Maximum Power Voltage(Vmp)[V]	41.39	38.93	41.57	39.20	41.75	39.39	41.87	39.67	42.05	39.86
Maximum Power Current (Imp)[A]	12.81	10.47	12.87	10.51	12.94	10.55	13.02	10.59	13.08	10.64
Open-circuit Voltage (Voc)[V]	49.24	46.34	49.39	46.55	49.54	46.66	49.69	46.86	49.88	47.06
Short-circuit Current (Isc)[A]	13.76	11.09	13.83	11.13	13.89	11.18	13.96	11.23	14.01	11.28
Module Efficiency STC(%)	20.51%		20.70%		20.89%		21.09%		21.28%	

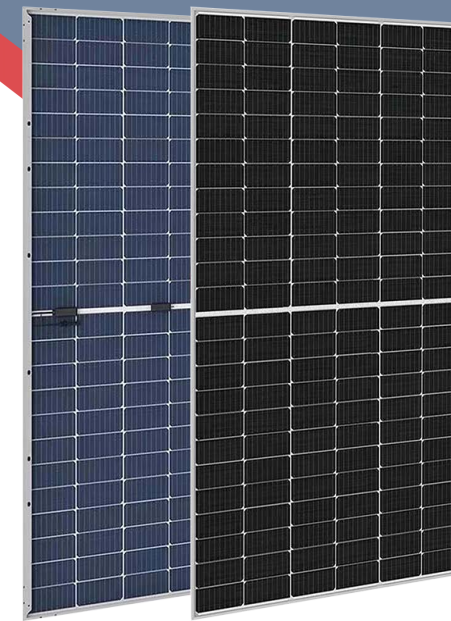
* STC : Irradiance at 1000 W/m², Cell Temperature 25°C, Air Mass AM1.5

* NMOT: Irradiance at 800W/m². Ambient Temperature 20°C , Wind Speed 1 m/s

Note: The electrical performance parameters in the catalog are used to compare different components and do not represent specific performance commitments for individual components.

Linear Performance Warranty





MONO PERC

Bifacial Module

22.65%

Max Efficiency

12 Years

Product Warranty

Bifacial Module

565W ~ 585W

Mechanical Parameters

Cell Type	Monocrystalline (182mm)	No. of Cells	144 [2 x (12 x 6)]
Dimensions	2278*1134*30 mm	Weight	31.5kg
Glass	2mm-2mm	Encapsulant Material	EVA/POE
Frame	Anodized Aluminium Alloy	Fire safety class	Class C
Output Cable	4.0mm ² , 300/300mm	Connector	MC4 Compatible

Temperature Ratings

Nominal operating cell temperature (NOCT)	45°C ± 2°C
Temperature Coefficient of Pmax	-0.34%/°C
Temperature Coefficient of Voc	-0.28%/°C
Temperature Coefficient of Isc	+0.048%/°C

Operating Parameters

Operational Temperature	-40°C~+85°C
Maximum System Voltage	1500V DC (IEC)
Maximum Series Fuse Rating	30A
Bifaciality	75%-80%

Electrical Characteristics

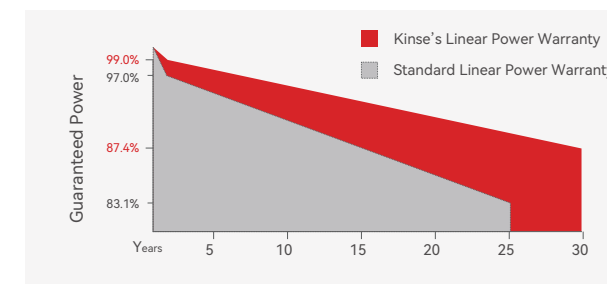
Module Type	KS565-144-M182		KS570-144-M182		KS575-144-M182		KS580-144-M182		KS585-144-M182	
	STC	NMOT	STC	NMOT	STC	NMOT	STC	NMOT	STC	NMOT
Maximum Power(Pmax)[W]	565	433	570	437	575	441	580	445	585	449
Maximum Power Voltage(Vmp)[V]	42.13	38.89	42.29	39.20	42.47	39.39	42.65	39.69	42.83	39.86
Maximum Power Current (Imp)[A]	13.42	10.47	13.48	10.51	13.54	10.55	13.60	10.59	13.66	10.64
Open-circuit Voltage (Voc)[V]	50.86	46.34	51.06	46.55	51.26	46.66	51.46	46.88	51.66	47.08
Short-circuit Current (Isc)[A]	14.20	11.09	14.26	11.13	14.32	11.18	14.38	11.24	14.44	11.30
Module Efficiency STC(%)	21.87%		22.07%		22.26%		22.45%		22.65%	

* STC : Irradiance at 1000 W/m², Cell Temperature 25°C, Air Mass AM1.5

* NMOT: Irradiance at 800W/m². Ambient Temperature 20°C , Wind Speed 1 m/s

Note: The electrical performance parameters in the catalog are used to compare different components and do not represent specific performance commitments for individual components.

Linear Performance Warranty



Portable Solar Panel – ETFE

Introducing Kinse Foldable Solar Panels – your efficient, portable energy solution. Ranging from 80W to 400W, these panels are perfect for camping, hiking, or emergencies. With a lightweight design for easy transport and storage, Kinse Foldable Solar Panels ensures a reliable and clean energy source for your lifestyle and work.





IP67 Waterproof



Foldable



Portable



High Efficiency



ETFE

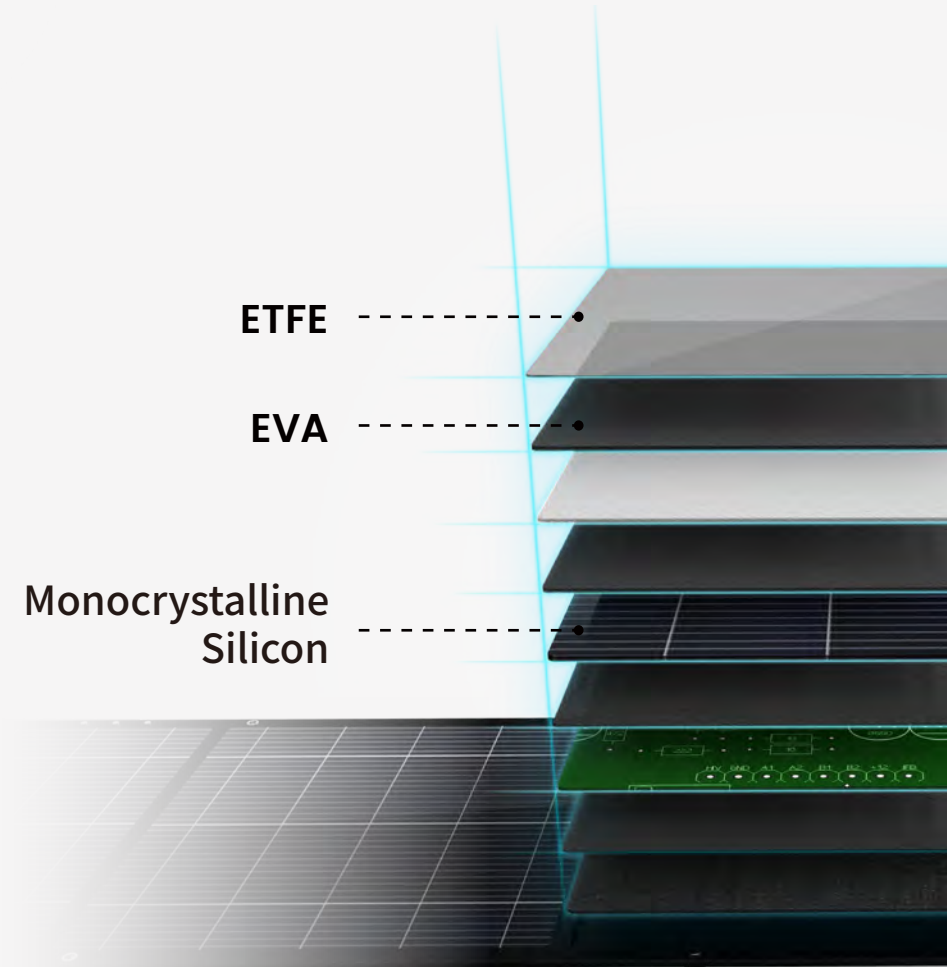
KS-400-FD

Model Number	KS-400-FD
Peak Power	400W
Maximum Power Point Voltage(Vmp)	39.82V
Maximum Power Point Current(Imp)	10.05A
Open Circuit Voltage(Voc)	49.81V
Short Circuit Current(Isc)	10.88A
Weight	14.2kg
Dimensions(Folded)	57.5 * 107 * 6 cm
Dimensions(Unfolded)	231 * 107 * 2.3 cm

ETFE

EVA

Monocrystalline
Silicon





KS-200-FD



KS-100-FD

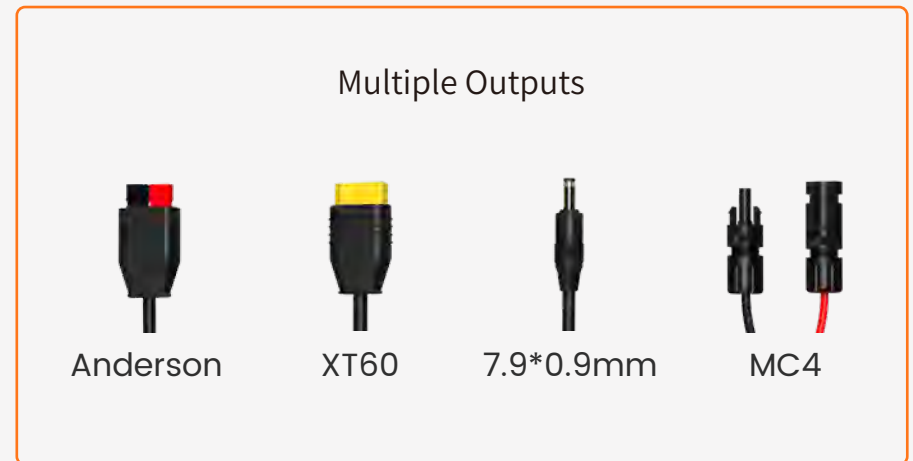
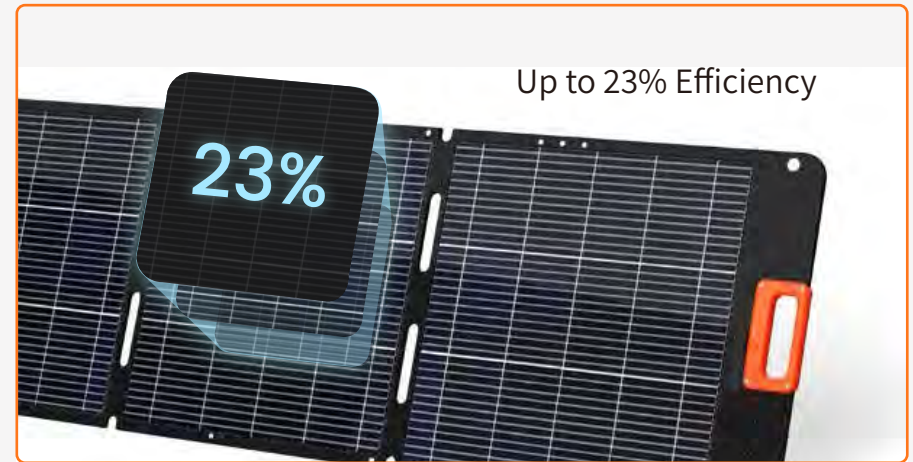
Model Number	KS-200-FD
Peak Power	200W
Maximum Power Point Voltage(Vmp)	19.47V
Maximum Power Point Current(Imp)	10.27A
Open Circuit Voltage(Voc)	25.01V
Short Circuit Current(Isc)	10.99A
Weight	11kg
Dimensions(Folded)	60.3 * 54 * 3.8 cm
Dimensions(Unfolded)	237 * 54 * 2.5 cm

Model Number	KS-100-FD
Peak Power	100W
Maximum Power Point Voltage(Vmp)	18.97V
Maximum Power Point Current(Imp)	5.27A
Open Circuit Voltage(Voc)	23.98V
Short Circuit Current(Isc)	5.5A
Weight	5.3kg
Dimensions(Folded)	42 * 54 * 3.8 cm
Dimensions(Unfolded)	138 * 54 * 2.5 cm



KS-80-FD

Model Number	KS-80-FD
Peak Power	80W
Maximum Power Point Voltage(Vmp)	18V
Maximum Power Point Current(Imp)	4.44A
Open Circuit Voltage(Voc)	21.6V
Short Circuit Current(Isc)	4.69A
Weight	4kg
Dimensions(Folded)	46.8 x 35.6 x 4.5 cm
Dimensions(Unfolded)	167 x 35.6 x 2.5 cm



Multiple Outputs

Anderson XT60 7.9*0.9mm MC4

Portable Solar Panel

Introducing our new Photovoltaic Foldable Panel – a sleek blend of high transparency and durable coating, with smart voltage output. Equipped with USB and Type C interfaces, it effortlessly powers your devices. Ideal for outdoor adventures and travel, providing a portable and efficient energy solution for a seamless and enjoyable experience.



2* USB
5V/3A



1* Type C
PD 100W



1* DC5521
20V



1*XT60
30A Max



1*Anderson
20A Max





KS-200-FDG

Model Number	KS-200-FDG
Peak Power	200W
Maximum Power Point Voltage(Vmp)	23.82V
Maximum Power Point Current(Imp)	8.4A
Open Circuit Voltage(Voc)	23.98V
Short Circuit Current(Isc)	10.99A
Lamination	ETFE
Weight	10kg
Dimensions(Folded)	57 * 59 * 5 cm
Dimensions(Unfolded)	232 * 59 * 3 cm



KS-100-FDG

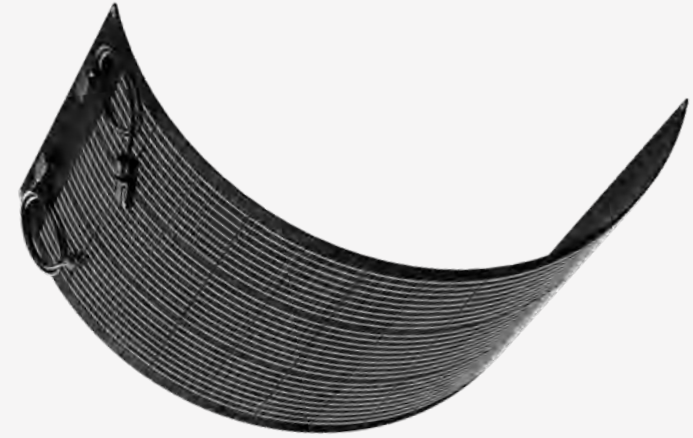
Model Number	KS-100-FDG
Peak Power	100W
Maximum Power Point Voltage(Vmp)	23.82V
Maximum Power Point Current(Imp)	4.2A
Open Circuit Voltage(Voc)	23.98V
Short Circuit Current(Isc)	5.5A
Lamination	ETFE
Weight	4.5kg
Dimensions(Folded)	57 * 59 * 5 cm
Dimensions(Unfolded)	115 * 59 * 3 cm

Flexible Solar Panel

Introducing KS-100-FL – a versatile 100W Flexible Solar Panel designed for customizable installations on rooftops, RVs, sailboats, and seamless portability during camping. Its cutting-edge flexibility allows it to adapt to diverse surfaces, ensuring an efficient and reliable energy source wherever you venture.

KS-100-FL is your go-to solution, effortlessly combining adaptability with high-powered performance for an on-the-go energy experience.





KS-100-FL

Model Number	KS-100-FL
Peak Power	100W
Maximum Power Point Voltage(Vmp)	19.8V
Maximum Power Point Current(Imp)	5.05A
Open Circuit Voltage(Voc)	23.98V
Short Circuit Current(Isc)	5.5A
Weight	2.5kg
Dimensions	108 x 58 cm
Cable Length	90 cm Customizable



Foldable Solar Charger

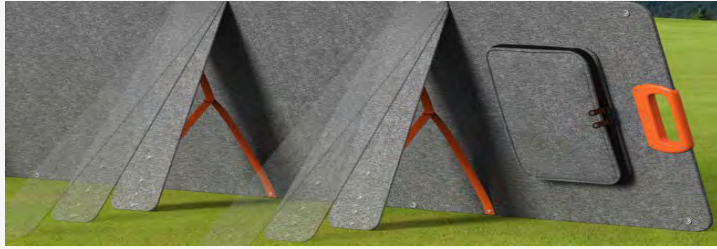
Introducing our Foldable Solar Charger series – available in 30W and 48W models. Featuring DC, USB-A, and USB-C outputs, these compact chargers are designed for maximum versatility. When folded, they shrink to a size smaller than an iPad, effortlessly fitting into your bag for convenient portability. Unleash the power of the sun with these lightweight and efficient solar chargers, ensuring you have reliable energy wherever your adventures take you.



Model	KS-30-FD	KS-48-FD
Maximum Power	30W	48W
Voltage at Maximum Power (Vmp)	13.07V	20.00V
Current at Maximum Power (Imp)	2.3A	2.4A
Open Circuit Voltage (Voc)	15.81V	24.17V
Short Circuit Current (Isc)	2.76A	2.75A
USB-A Output	5V/2.4A (QC3.0)	
USB-C Output	5V/2.4A	
DC7909 Output	24V/1.25A	24V/2A
Cell Type	Monocrystalline Silicon	
Waterproof	IP67	
Operating Temp	14~158 °F (-10~70°C)	
Unfolded Size	30.7 x 11.4 x 0.1 in (780*290*3.5 mm)	48.2 x 11.4 x 0.1 in (1225*290*3.5 mm)
Folded Size	11.5 x 7.9 x 0.6 in (292*200*15 mm)	11.5 x 8.1 x 1.0 in (292*205*25 mm)
Weight	2.4 lbs (1.1 kg)	3.7 lbs (1.7 kg)

Detail Presentation

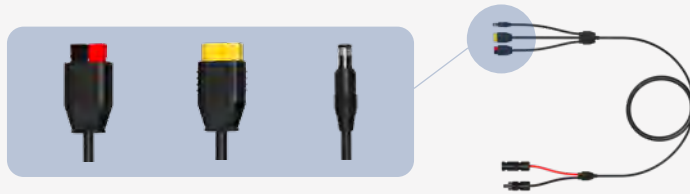
Adjustable
Stands



Durable
Handle



3-in-1
Connector



Cable
Bag



RV Travel



Roof Photovoltaic



Yacht



Camping

Maanshan Kinse Energy Technology Co., LTD

✉ info@kinse-solar.com

☎ Mandy: +86 139 129 55645

🌐 www.kinse-solar.com

☎ David: +86 135 125 48980

📍 No.9, Tagang Industrial Park, Tongzha Town, Hanshan County, Ma'anshan City

